



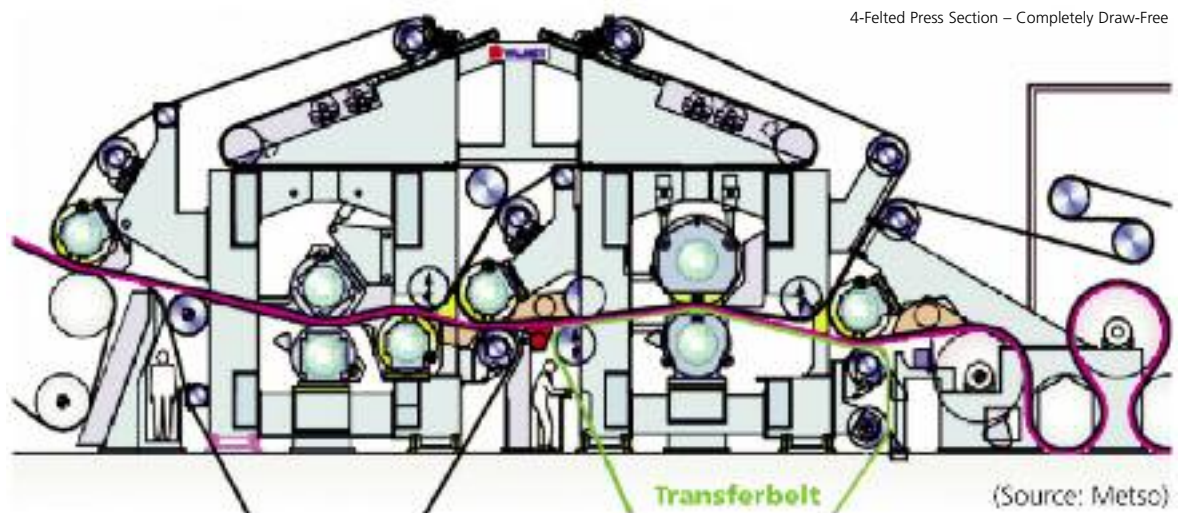
The Next Generation Transferbelt

webmover.

Heimbach – wherever paper is made.



WEBMOVER – Transferbelt (R)Evolution

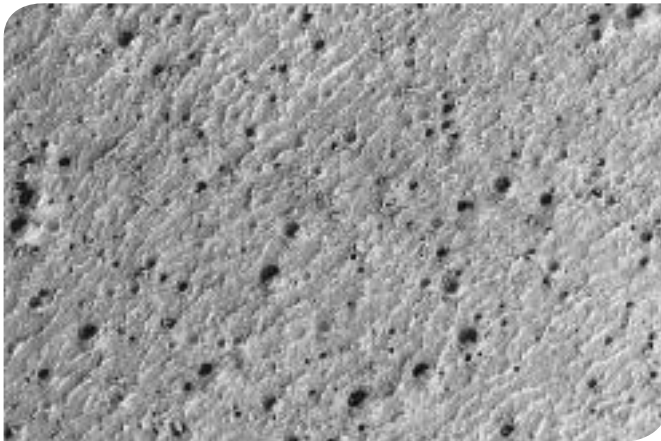


A typical press configuration without any open draws is shown above. In the majority of the cases the transferbelt position is the 2nd press bottom position, where the transferbelt transports the web "closed" from the 1st press through the 2nd press to the dryer section. Using this draw-free sheet control technology, eliminating the specific problems of the central roll, speeds of over 2000 m/min can be reached.

WEBMOVER can be described as a „transport belt in the conventional sense without de-watering function“. Its patented porous, smooth surface with special topographical features guarantees trouble free sheet transfer, excellent sheet support and problem free sheet separation to the dryer section. Due to the very uniform material distribution in the cross section of the WEBMOVER any water uptake has minimal influence on its dimensions which provides the paper maker with extra security regarding runnability.

In general it can be said that the installation of transferbelts provides an ideal solution for the complete closing of open draws and the optimisation of sheet control.

WEBMOVER - Engineered surface



Paper-Side Surface

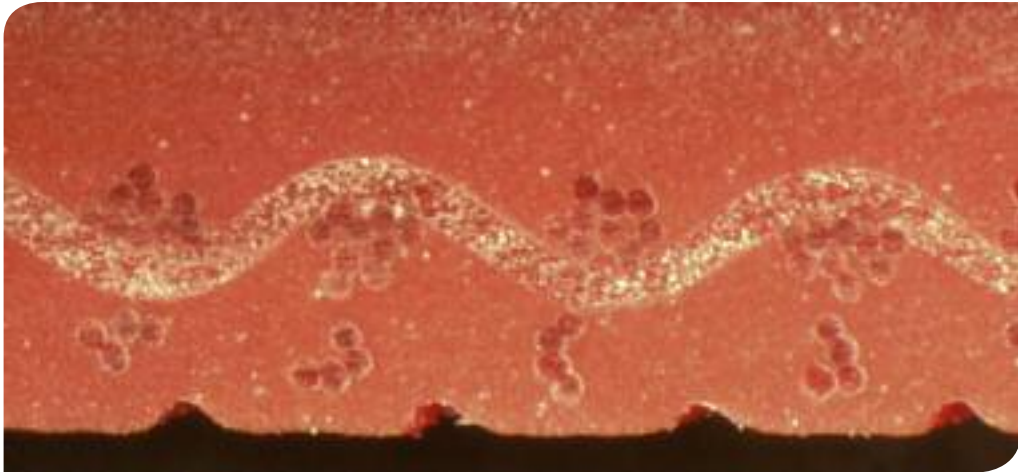
Transferbelts are a well established means for sheet transfer between press and dryer sections. In order to develop a new concept for transferbelts, Heimbach made use of the known strengths and weaknesses of products already in use in these positions and created the best possible design from that information.

The new characteristics of this WEBMOVER-design are based on the fully-embedded base weave structure which enables us to deliver a belt with outstanding properties in terms of precision, stability and wear resistance.

Together with the patented porous paper-side surface for controlled adhesion and release properties WEBMOVER is a unique product specially designed to provide the best paper-quality on fast running paper machines.

Highest precision and stability

Cross Section



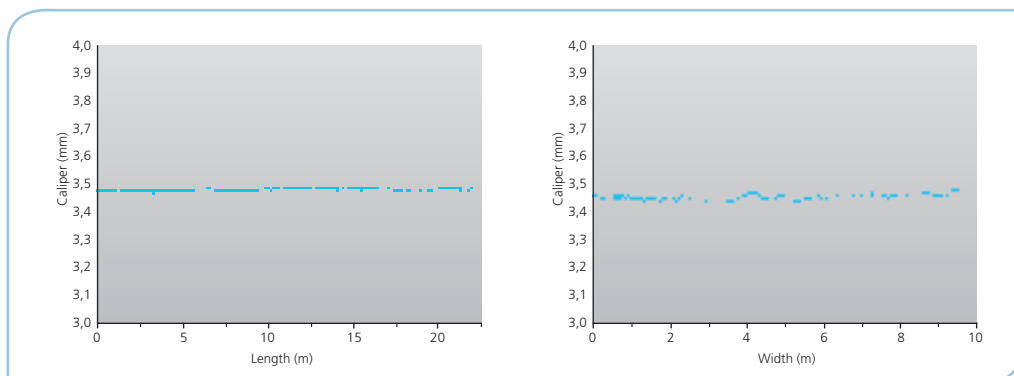
One of the fundamental requirements for transferbelts is mechanical stability and this, therefore, became one of the key target properties for our WEBMOVER. The high stability that we have designed into the product is based on 2 different factors:

1) High Performance Polyurethane coating providing extreme durability through extreme abrasion resistance on both paper and machine sides of the belt.

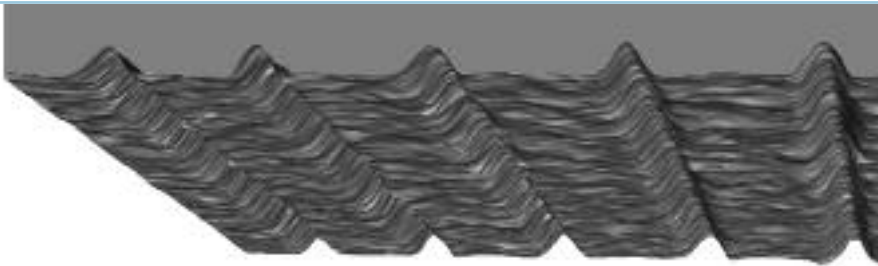
2) Special base cloth design which keeps the structurally important yarn components at a safe distance from any surface. This way the WEBMOVER remains mechanically stable even in the case of wear.

The embedded base weave concept also allows Heimbach to provide the customer with an excellent accuracy and control of caliper. This precision guarantees a very uniform pressure distribution in the nip.

Typical Caliper Measurements



Optimised runnability



Machine-Side Structure

Besides the patented paper-side surface and the unique completely embedded cross section the WEBMOVER also comes with an engineered machine side. In order to achieve a better runnability the machine side of the WEBMOVER is equipped with a structure for trouble free machine side water management and guiding.

Base weave:

- Double Layer
- PA 6 monofilaments

Tensile strength:

- MD: 140 daN/cm
- CD: 95 daN/cm

Weight:

- 4300 g/m²

Specification

webmover.

Coating:

- Polyurethane
- 94 Shore A
- Microporous structure

Caliper:

- 3,5 mm
- Tolerance: + - 0,05 mm

We offer

- A unique belt design, with the woven component fully embedded in the polyurethane structure
- Outstanding wear resistance through design and high performance coating
- Very high mechanical stability
- Excellent precision
- Very high uniformity for best pressure distribution in the nip
- Patented porous surface for engineered adhesion and release properties
- Easy and fast start up after machine shut down

WEBMOVER – the next generation transferbelt

Heimbach GmbH & Co. KG • D-52348 Düren • phone +49 (0) 24 21 802-0 • fax +49 (0) 24 21 802-700
heimbach-paper@heimbach.com • www.heimbach.com

Heimbach Asia (Singapore) Pte. Ltd. • 9 Temasek Boulevard • # 08 - 03 A Suntec Tower Two • Singapore 038989
heimbach-asia@heimbach.com

Heimbach Ibérica S.A. • Apartado 337 • E-09080 Burgos • heimbach-iberica@heimbach.com

Heimbach Specialities AG • Tülje 65 • B-4721 Neu-Moresnet • heimbach-specialities@heimbach.com

Heimbach Switzerland AG • Solothurner Str. 65 • Postfach 7 27 • CH-4603 Olten
heimbach-switzerland@heimbach.com

Heimbach U.K. • Bradnor Road • Manchester M22 4TS • UK • heimbach-uk@heimbach.com

